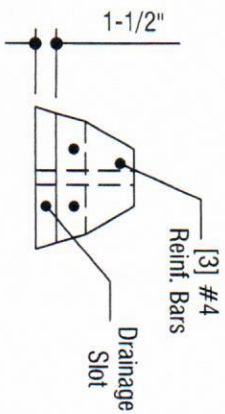
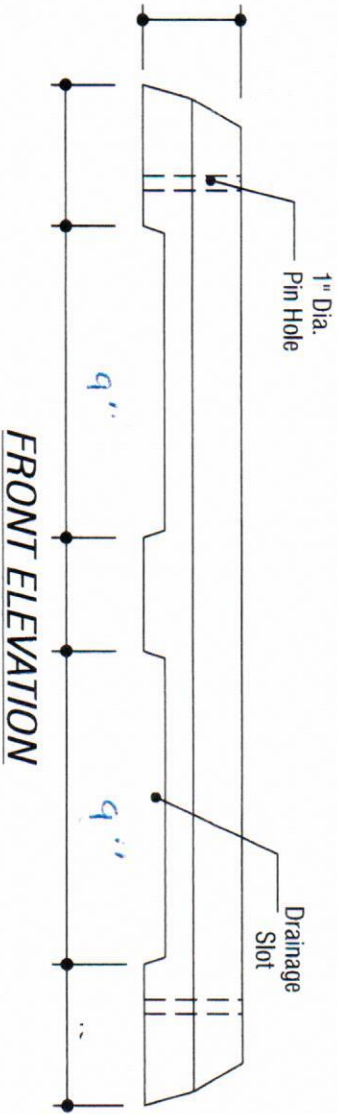


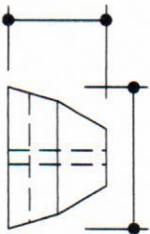
**PLAN VIEW**



**SECTION**



**FRONT ELEVATION**



**SIDE ELEVATION**



**Standard Duty Wheelstops**  
**[6'-0" Long]**  
**Stock Item**

**DESIGN DATA & GENERAL NOTES**

- [1] Concrete strength  $f_c = 4,000$  p.s.i. @ 28 days. Density = 150 pcf.
- [2] Cement - Portland Type I/II per ASTM C 150-92.
- [3] Admixtures per ASTM C 260-86 & C 494-92.
- [4] Reinforcing per ASTM A615, Grade 60, domestic. Min 1" cover.
- [5] Smooth steel form finish