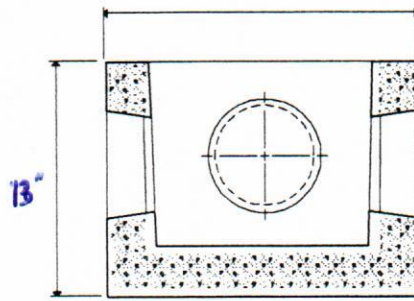
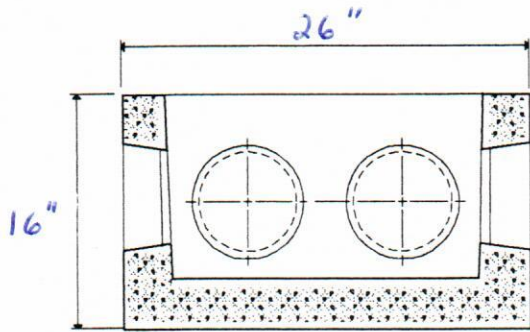
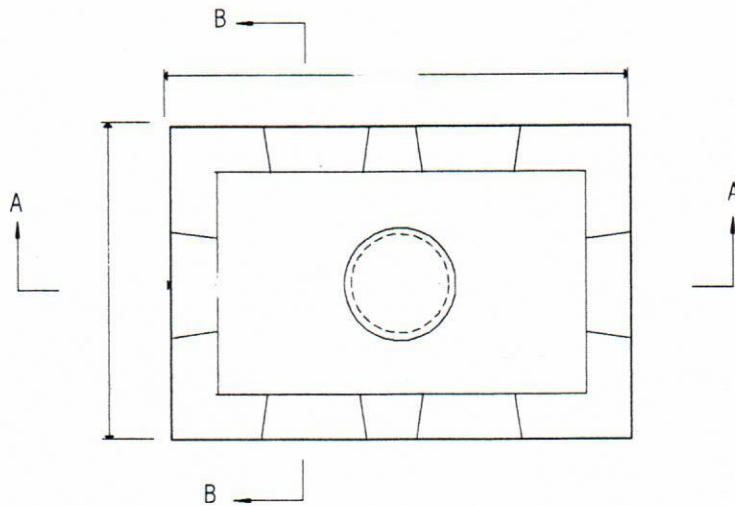


TOP SLAB



Inlet



DESIGN DATA & GENERAL NOTES

- [1] Concrete strength $f_c = 4,000$ p.s.i. @ 28 days. Density = 150 pcf.
- [2] Cement - Portland Type I/II per ASTM C 150-92.
- [3] Admixtures, air, & plasticizers per ASTM C 260-86 & C 494-92.

REINFORCING DESIGN:

Reinforcing per ASTM A185. Min. 1-1/2" cover
3x8 Welded Wire Mesh through out