

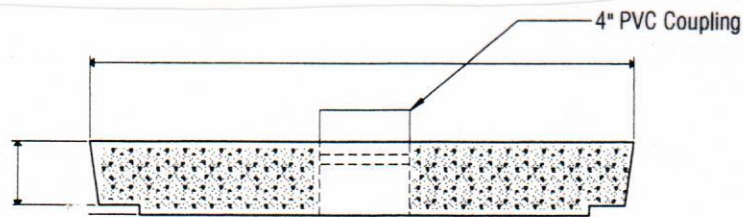
Babylon

V A U L T
S I N C E 1 9 3 0

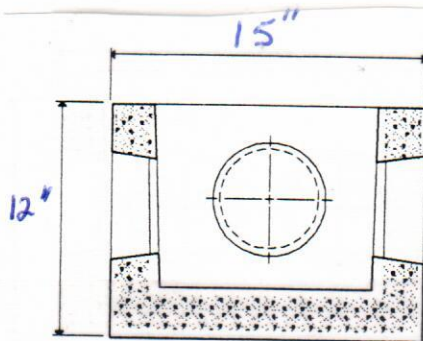
Burial Vaults - Septic Tanks 3-hole Distribution Box

925 WAKEFIELD VALLEY ROAD
NEW WINDSOR, MD 21776

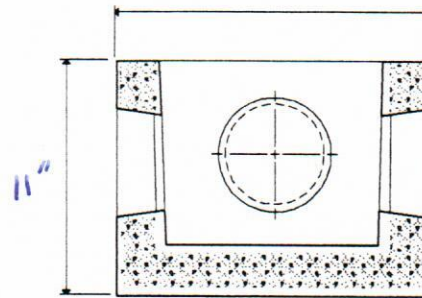
PHONE:
410-848-0393
FAX:
410-848-3551



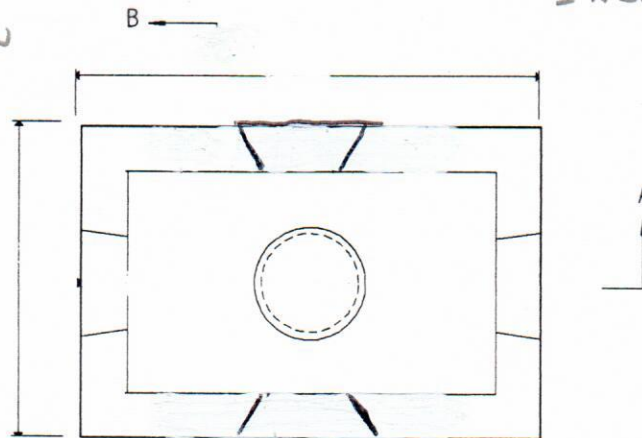
TOP SLAB



Side View



INlet



Top View

DESIGN DATA & GENERAL NOTES

- [1] Concrete strength $f_c = 4,000$ p.s.i. @ 28 days. Density = 150 pcf.
- [2] Cement - Portland Type I/II per ASTM C 150-92.
- [3] Admixtures, air, & plasticizers per ASTM C 260-86 & C 494-92.

REINFORCING DESIGN:

Reinforcing per ASTM A185. Min. 1-1/2" cover
3x8 Welded Wire Mesh through out